



BLUE LOGIC

001 FULL BORE RECEPTACLE

Full-bore receptacle machined from solid block of forged bolt with weld neck interface. Other interfaces available upon request.

002 HIGH FLOW – LOW PRESSURE DROP

The Stab and Receptacle are optimized with respect to high flow capacity and low pressure drop.

BLUE LOGIC Ø150 HOT STAB SYSTEM, API 17H TYPE 4

Blue Logic's Ø150 Hot Stab System is designed for high-flow operations.

003 LARGE RANGE OF SYSTEM COMPONENTS

A large range of components available to suit any project requirement.

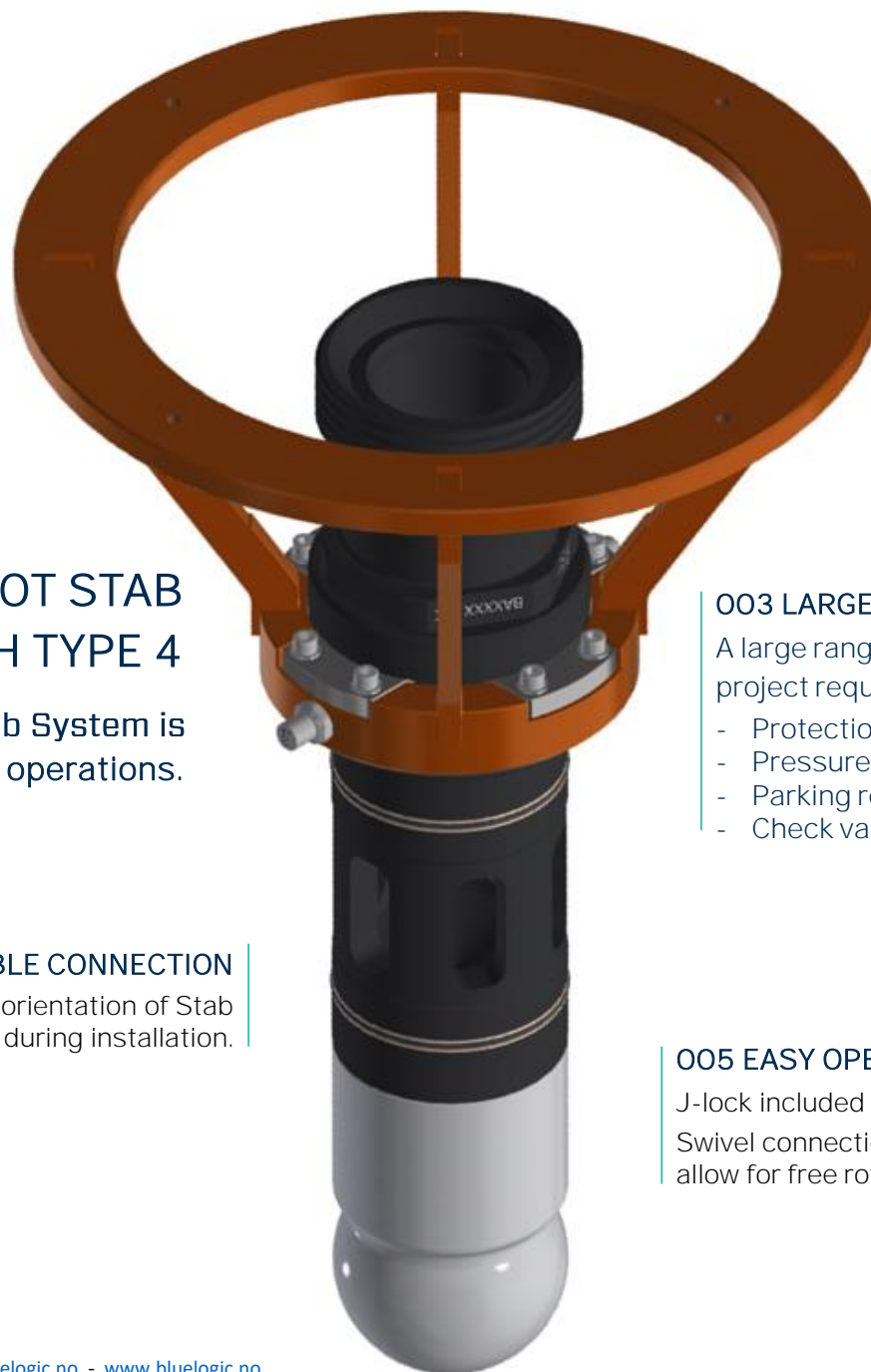
- Protection stab
- Pressure stab
- Parking receptacle
- Check valve

004 FLEXIBLE CONNECTION

No requirement for specific orientation of Stab during installation.

005 EASY OPERATION

J-lock included to lock the Stab into the Receptacle. Swivel connection between stab and handle/J-lock to allow for free rotation independent of hose orientation.





BLUE LOGIC

Blue Logic Ø150 Hot Stab System

Technical Data

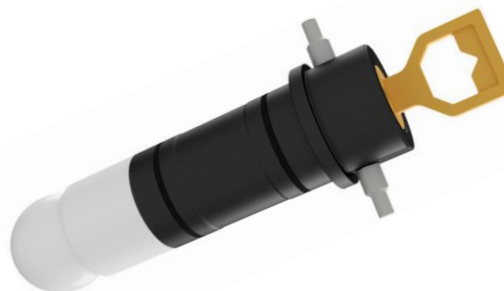
General Data	
Design standard	API 17H Type 4
Depth rating	3000m
Operating temperature	-4 to +60°C
Material, stab ¹	S165M
Material, rec. ¹	Super Duplex
Material, seals ²	HPU
Fluid compatibility ³	Mineral based control fluids, Synthetic control fluids, MEG, Seawater ++
Dimensions, Stab	Ø550 x 831 mm
Dimensions, Receptacle	Ø399 x 342 mm
Weight, air/water, Stab	82,7 / 70,0kg
Weight, air/water, Receptacle	87,7 / 76,5 kg
Hydraulic interface, Stab ⁴	4'' Weco Fig 1502
Hydraulic interface, Receptacle ⁴	4'' Weld Neck, Sch. 120
Hydraulic bore, Stab	Ø88 mm
Hydraulic bore, Receptacle	Ø92 mm
Max. flow / pressure drop	6000 L/min / 18 Bar
Working pressure	345 Bar / 5 000 Psi



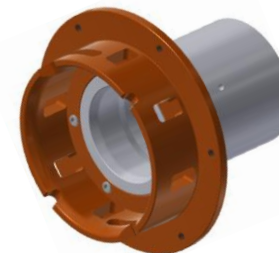
BB2432 Ø150 SP Stab 5K



BA5787 Ø150 SP Rec 5K



BA5190 Ø150 SP Press Stab 5K



BA5189 Ø150 SP Park Rec Vented



BA5797 Ø150 SP Prot Stab Vented

1: Other materials available upon request

2: Material to suit special medium available upon request

3: For special fluids, contact Blue Logic

4: Other hydraulic interfaces available upon request